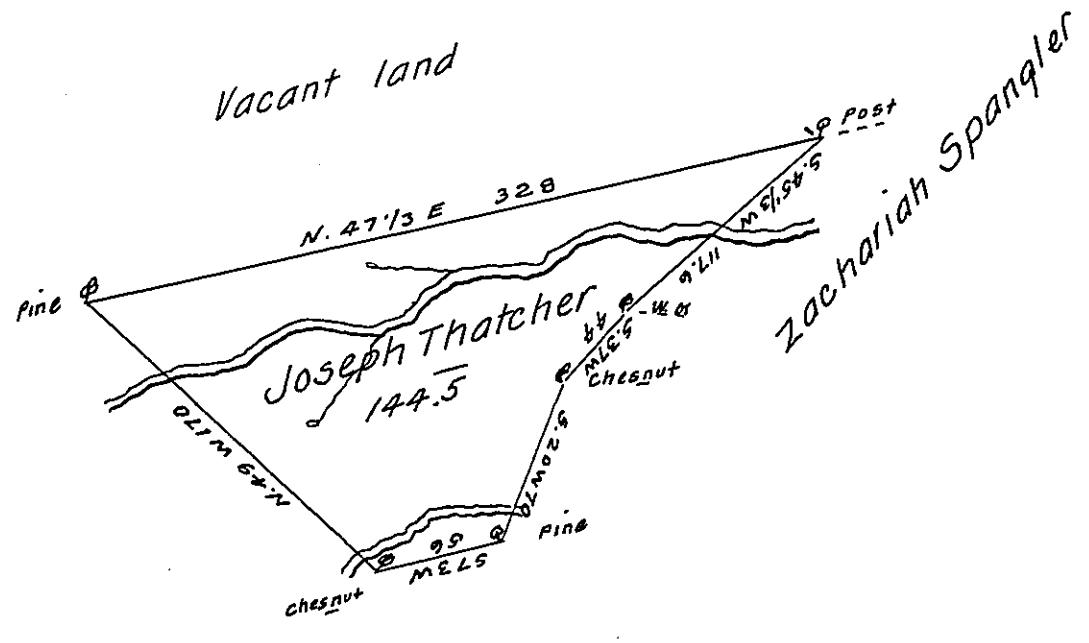


Courses. Dist.

- S. 37 W. 44.
- S. 20 W. 70.
- S. 73 W. 56.
- N. 49 W. 170.
- N. 47 1/3 E. 328
- S. 45 1/3 W. 117 1/2



The Draught of a tract of Land situate in Greenwood township Cum-  
 berland County containing one hundred & forty four acres & an half  
 & the allowance of six per cent  
 Surveyed for Joseph Thatcher. July the 29<sup>th</sup> 1785 in pursuance  
 of a Warrant from his Excellency the President of the Supreme  
 Executive Council Dated at Philad.<sup>a</sup> March the 16<sup>th</sup> 1785.

John Lukens Esq<sup>r</sup>. }  
 Surv<sup>r</sup>. Gen! }

Ja<sup>s</sup> Harris D.S.

IN TESTIMONY that the above is a copy of the original remaining on file in  
 the Department of Internal Affairs of Pennsylvania, made  
 conformably to an Act of Assembly approved the 16th day of  
 February, 1833, I have hereunto set my Hand and caused  
 the Seal of said Department to be affixed at Harrisburg,  
 this sixteenth day of September 1907.

*Henry Howell*  
 Secretary of Internal Affairs.